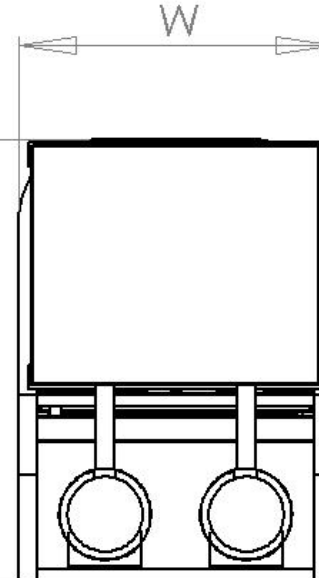
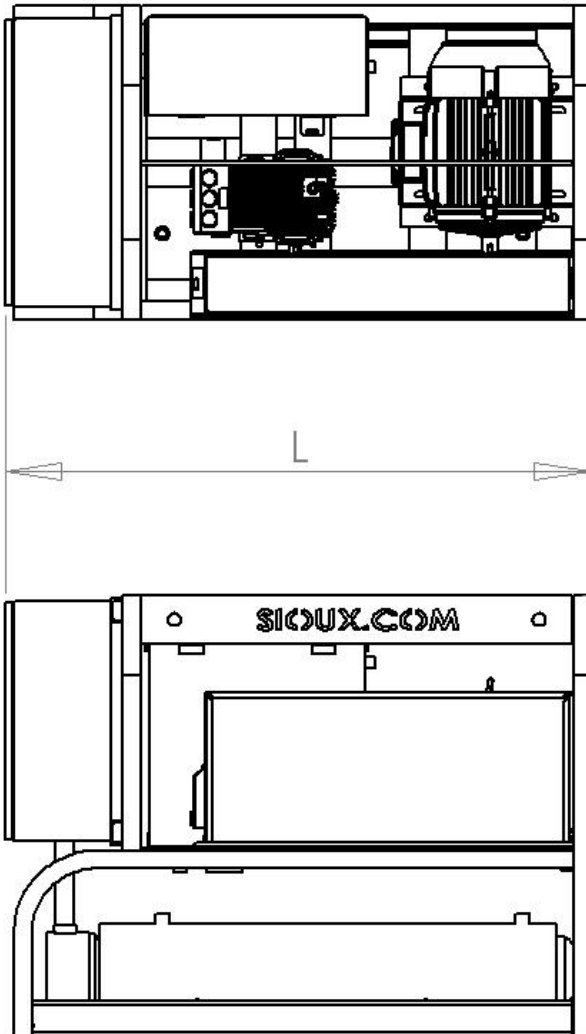


# Sioux All Electric EN-SERIES

## 60 HZ Dimensional Data

MODEL NUMBER	APPROXIMATE MACHINE DIMENSIONS						APPROXIMATE XP MACHINE DIMENSIONS					
	LENGTH		WIDTH		HEIGHT		LENGTH		WIDTH		HEIGHT	
	IN	CM	IN	CM	IN	CM	IN	CM	IN	CM	IN	CM
EN-55-S	50	127	22	56	33	84	54	137	25	64	44	112
EN-90-S	50	127	22	56	33	84	54	137	25	64	44	112
EN-115-S	50	127	22	56	33	84	54	137	25	64	44	112
EN-170-S	65	165	36	91	42	107	68	173	41	104	44	112
EN-230-S	76	193	54	137	42	107	76	193	54	137	48	122
EN-140-H4-1200	50	127	22	56	33	84	54	137	25	64	44	112
EN-175-H4-1200	50	127	22	56	33	84	54	137	25	64	44	112
EN-270-H4-1200	50	127	22	56	33	84	54	137	25	64	44	112
EN-345-H4-1200	48	122	26	66	37	94	53	135	30	76	44	112
EN-140-H4-1800	50	127	22	56	33	84	54	137	25	64	44	112
EN-175-H4-1800	50	127	22	56	33	84	54	137	25	64	44	112
EN-270-H4-1800	48	122	26	66	37	94	53	135	30	76	44	112
EN-345-H4-1800	48	122	26	66	37	94	53	135	30	76	44	112
EN-140-H4-3000	50	127	22	56	33	84	54	137	25	64	44	112
EN-175-H4-3000	48	122	26	66	37	94	54	137	25	64	44	112
EN-270-H4-3000	48	122	26	66	37	94	53	135	30	76	44	112
EN-345-H4-3000	50	127	26	66	37	94	55	140	30	76	44	112
EN-120-H8-1200	50	127	22	56	33	84	54	137	25	64	44	112
EN-240-H8-1200	50	127	22	56	33	84	54	137	25	64	44	112
EN-120-H8-1800	50	127	22	56	33	84	54	137	25	64	44	112
EN-240-H8-1800	50	127	22	56	33	84	54	137	25	64	44	112
EN-120-H8-3000	50	127	22	56	33	84	54	137	25	64	44	112
EN-240-H8-3000	48	122	26	66	37	94	53	135	30	76	44	112

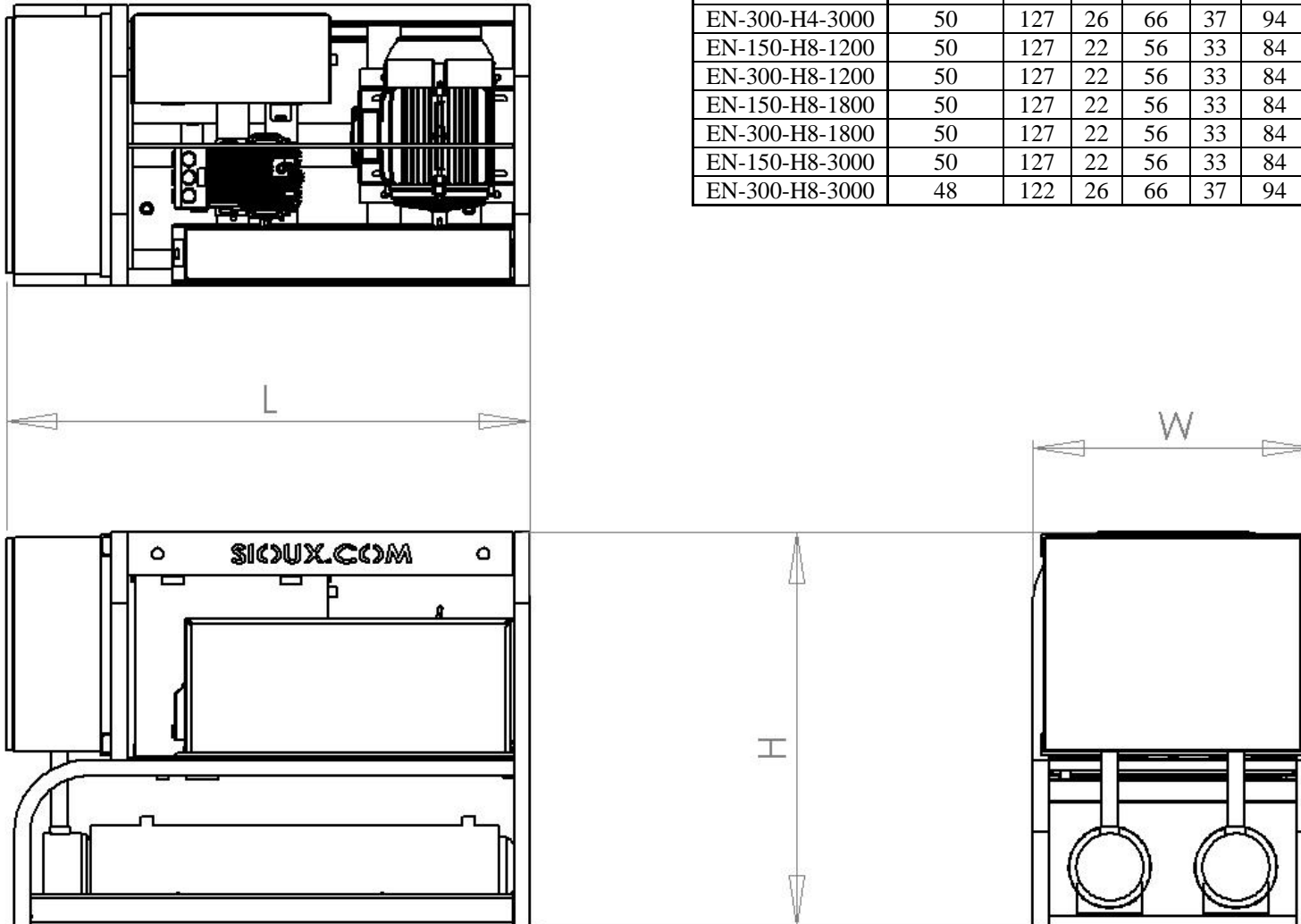


These drawings are for general dimensions only. Number of elements, pumps, and motors will vary by model. For exact drawings please contact factory.

# Sioux All Electric EN-SERIES

## 50 HZ Dimensional Data

MODEL NUMBER	APPROXIMATE MACHINE DIMENSIONS						APPROXIMATE XP MACHINE DIMENSIONS					
	LENGTH		WIDTH		HEIGHT		LENGTH		WIDTH		HEIGHT	
	IN	CM	IN	CM	IN	CM	IN	CM	IN	CM	IN	CM
EN-50-S	50	127	22	56	33	84	54	137	25	64	44	112
EN-100-S	50	127	22	56	33	84	54	137	25	64	44	112
EN-150-S	65	165	36	91	42	107	68	173	41	104	44	112
EN-200-S	76	193	54	137	42	107	76	193	54	137	48	122
EN-150-H4-1200	50	127	22	56	33	84	54	137	25	64	44	112
EN-300-H4-1200	48	122	26	66	37	94	53	135	30	76	44	112
EN-150-H4-1800	50	127	22	56	33	84	54	137	25	64	44	112
EN-300-H4-1800	48	122	26	66	37	94	53	135	30	76	44	112
EN-150-H4-3000	48	122	26	66	37	94	54	137	25	64	44	112
EN-300-H4-3000	50	127	26	66	37	94	55	140	30	76	44	112
EN-150-H8-1200	50	127	22	56	33	84	54	137	25	64	44	112
EN-300-H8-1200	50	127	22	56	33	84	54	137	25	64	44	112
EN-150-H8-1800	50	127	22	56	33	84	54	137	25	64	44	112
EN-300-H8-1800	50	127	22	56	33	84	54	137	25	64	44	112
EN-150-H8-3000	50	127	22	56	33	84	54	137	25	64	44	112
EN-300-H8-3000	48	122	26	66	37	94	53	135	30	76	44	112



These drawings are for general dimensions only. Number of elements, pumps, and motors will vary by model. For exact drawings please contact factory.