



# Superior Profits and Better Concrete

## **SIoux® WATER HEATERS FOR BETTER CONCRETE IN COLD WEATHER**

For 25 years Sioux® Corporation has been the leader in providing a variety of water heating systems for ready mix, precast, prestress, pipe, vault and block operations.

Concrete pouring with hot water has many benefits:

- It is less expensive and safer than chemicals
- It is less expensive than heating aggregate
- It reduces rebar corrosion, cracking and spotting

- It reduces the amount of cement required to compensate for lower temperatures.
- It provides faster set times, faster screeding and a better finish

Sioux Water Heaters provide precise water temperature for high quality concrete, faster turnaround and superior float and finishing. Chemical use is minimized, cutting costs and eliminating efflorescence and discoloration.

## **WATER HEATER/PUMPING STATION**

Sioux Corporation has developed a combination Water Heater/Pumping Station for cold weather pouring. The M Series is designed for applications where large quantities of water are needed in a short time period, such as when many trucks need to be loaded quickly.

After the unit is fired, hot water is available immediately on a continuous basis. Units can be used in a new installation or can be added to an existing set-up. Water can be fed directly to trucks or recirculated through a system incorporating a holding tank.

## **SIoux® WATER HEATERS BUILT TO FIT YOUR NEEDS**

Sioux manufactures over 25 different Water Heater models, and can custom build units to fit special applications. All units are built to ASME code and are National Board Registered. Standard models are

available from 1,000,000 to 3,000,000 BTU/hour output. Heavy duty frame is constructed of 14-gauge steel and angle iron.



## HOT PRESSURE WASHER FOR READY MIX EQUIPMENT

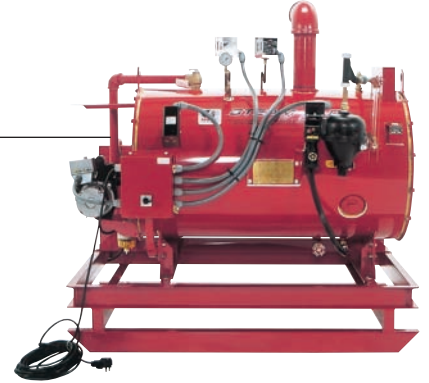
Sioux® Steam Cleaner's line of self-contained hot pressure washers are ideal for cleaning and maintaining ready mix equipment. Units feature hot pressure washing plus cold pressure washing in one compact unit. A steam option is also available.

Sioux hot pressure washers and steam cleaners go right to the job site to clean dirt, oil, and grease off of mixers, trucks, equipment and facilities. Units include gasoline or diesel engine on skid or over-the-road trailer mounting to clean equipment at remote locations. Ratings are 1.7 - 16 GPM, 100 - 3,000 PSI.

## STEAM-FLO® SPEEDS UP CURING

The Sioux Steam-Flo® speeds up curing in precast, pipe, vault, prestress and block operations. The Sioux Steam-Flo saturates the curing area, uniformly heating concrete, speeding up the long curing process. Moisture in the steam reduces cracking. Benefits are increased output and faster turnover of forms. The unit is ideal for overflow production, outlying areas, as well as thawing and de-icing aggregates. This unit can also be used for sand and aggregate heating.

The rugged steam generator requires minimal floor space. The unit can be stationary mounted on legs, skid mounted, or portable mounted on a towable trailer. Available in 11, 20, and 25 BHP models, with 370-845 lbs. steam per hour.



## COLD PRESSURE WASHERS

Sioux Cold Pressure Washers are great for washing trucks, mixing drums and equipment, as well as vehicles and plant facilities. These units require little maintenance. Choose from electric motor, gasoline engine or diesel engine. Ratings: 3 - 5 GPM, 1,000 - 5,000 PSI.

**Sioux is the industry leader in custom, application-specific designs.**

**A wide range of options are available, including 50 Hz electricals, custom frames, water tanks, trailers, and other accessories to provide the EXACT equipment you need.**

This product is covered by one or more U.S. patents and/or U.S. patents pending. Copyright 2006 Sioux Steam Cleaner Corporation. No portion of this literature may be reproduced without express written permission of Sioux Steam Cleaner Corporation.

**Call us Toll-free at (888) 763-8833  
(605) 763-3333 or visit us at [www.sioux.com](http://www.sioux.com)**



Quality Since 1939

### ® SIOUX STEAM CLEANER CORPORATION

One Sioux Plaza • Beresford, SD 57004-1500  
Toll-free: (888) 763-8833 • Tel: (605) 763-3333 • Fax: (605) 763-3334  
email@sioux.com • www.sioux.com

